



Here are some of the things we will talk about when you call...

Print out this list and jot some notes on it then give us a call toll free 1-888-660-2025.

1. How will you use the structure?

- scale house?
- guard shack?
- valve house?
- fire control pump house?

2. Common sizes to choose from:

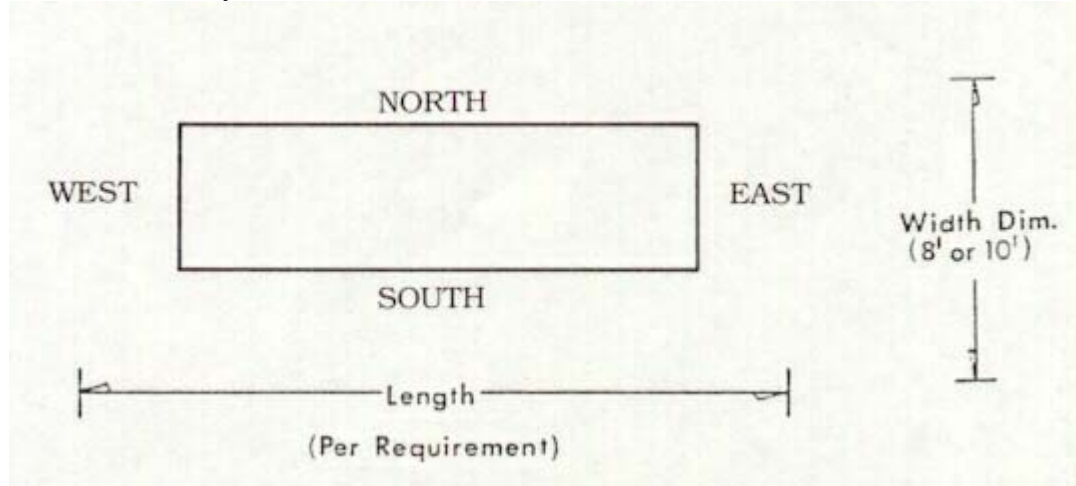
- 4' x 6'
- 6' x 8'
- 8' x 8'
- 8' x 10'
- 8' x 12'
- 8' x 14'
- 8' x 16'
- 8' x 18'
- 8' x 20'
- 10' x 10'
- 10' x 12'
- 10' x 14'
- 10' x 16'
- 10' x 18'
- 10' x 20'
- also 12', 14', and 16' wide units

3. Optional features/special needs:

- Base Board Heater with Thermostat (1000, 2000, 3000 watts depending on structure size)
- Thru-wall Air Conditioning (8, 10, 12 K-BTU depending on structure size; sleeve included)
- Opening with wiring only for customer supplied air conditioner
- Additional Door (specify location)
- Steel Door Upgrade vs. Standard Hollow Core Door
- Additional 46" x 27" Insulated Window
- Additional 30" x 27" Insulated Window
- Additional 46" x 36" Insulated Window
- Sliding Window w/Screen vs. Fixed Picture
- Steel Studs (non-combustible construction)
- 3 phase wiring
- Diamond plate flooring
- Standard 7' ceiling; can build up to 10' ceilings

4. For talking purposes, let's agree the length runs West to East.

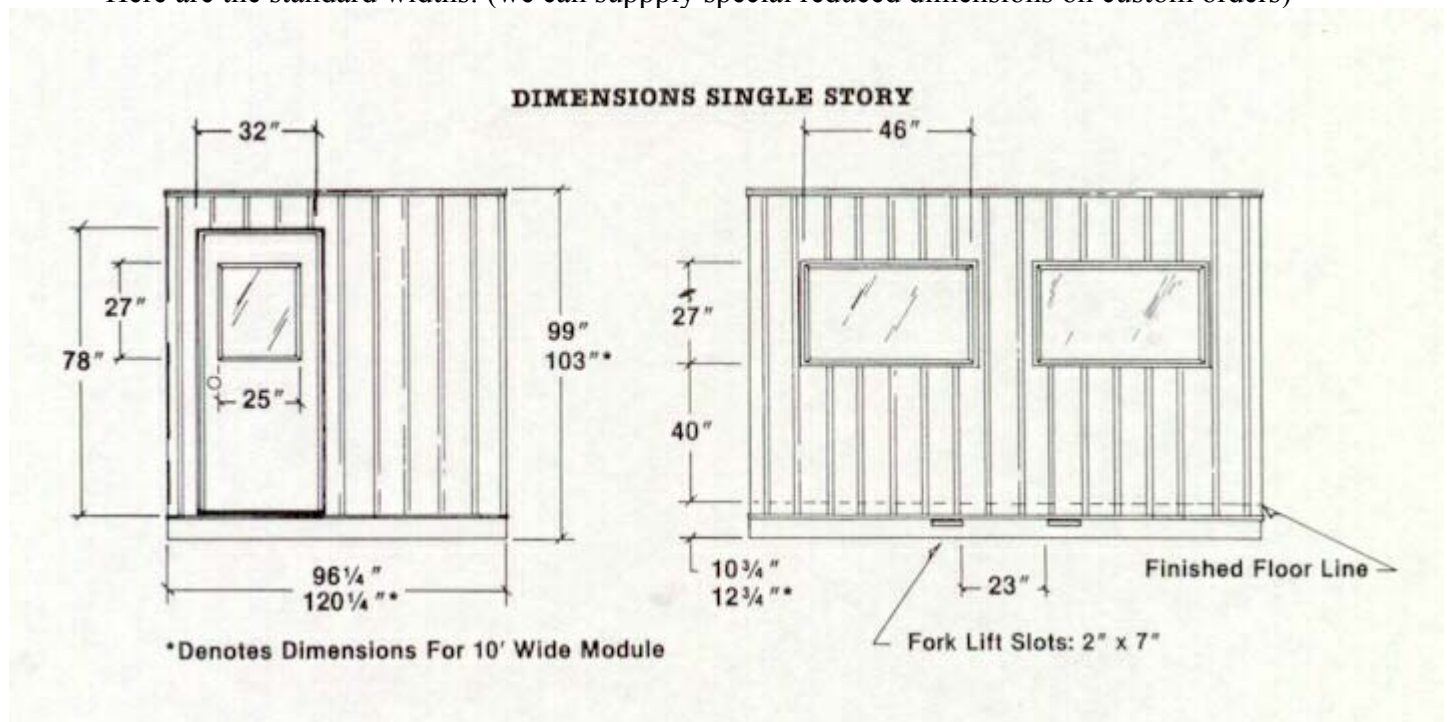
- Then we can refer to walls as the North wall, South wall, East wall, and West wall.
- That makes it clear where you want windows, doors, outlets, other features and overall size.



5. Will the structure be outside or is it coming inside the plant?

- If it will be used inside (like a receiving dock office, for example) there must be a door big enough to get it inside!

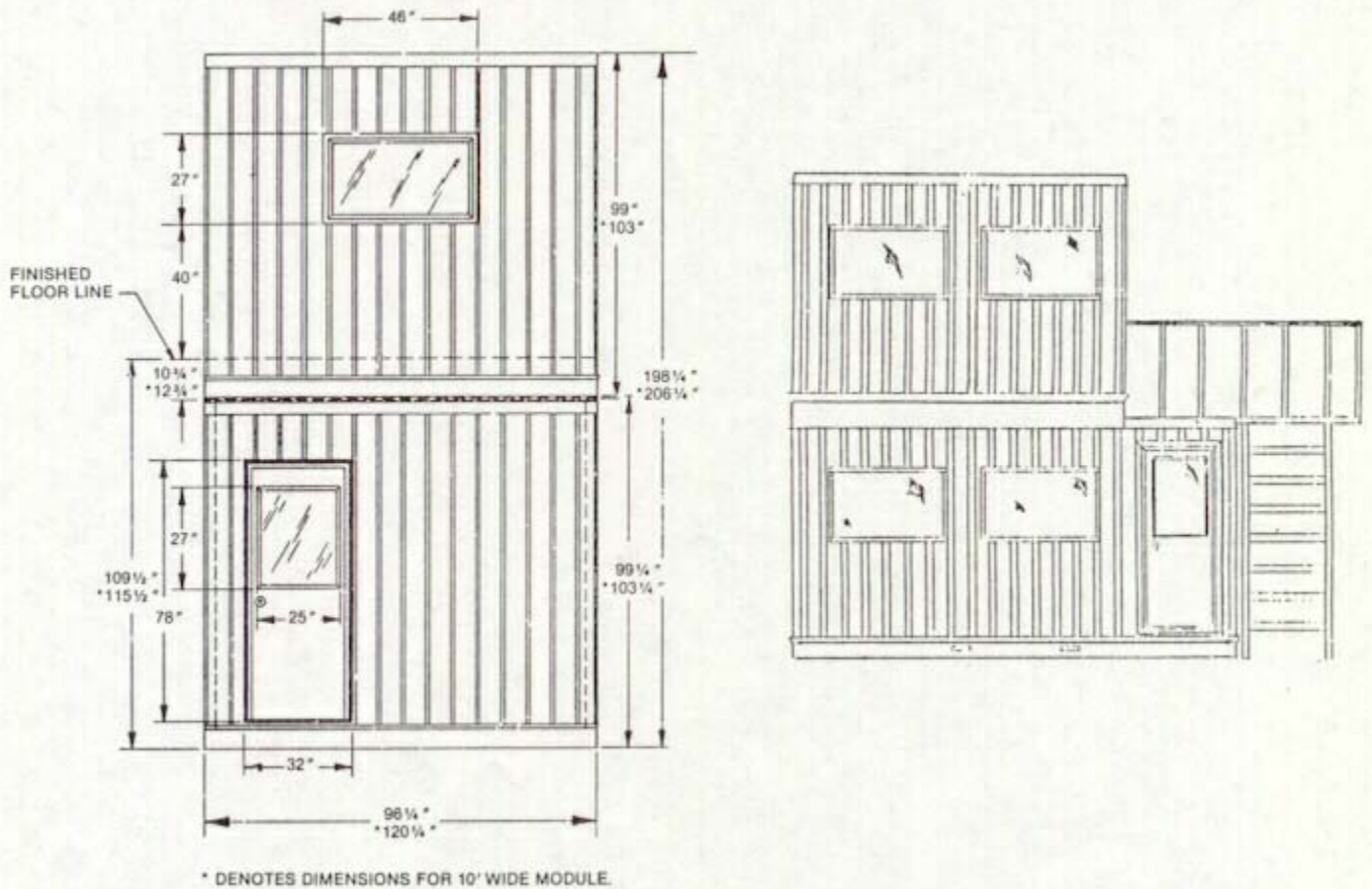
- Here are the standard widths: (we can supply special reduced dimensions on custom orders)



6. The 2nd story option:

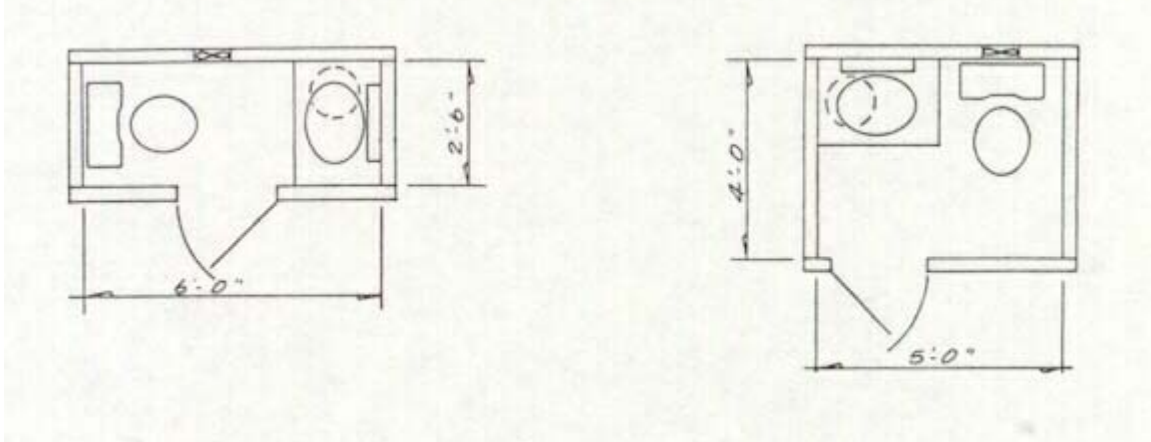
- no mezzanine or superstructure required (they stack!)
- when requirements change, they can be lifted off with a forklift and used elsewhere
- customer supplies stairways and landings or we can supply them
- here are typical stacking sizes:

DIMENSIONS - DOUBLESTORY



7. Will you need a bathroom?

- half bath option includes commode, lavatory, medicine cabinet, water heater, and exhaust fan
- half bath option requires access underneath the building (or rear discharge) for plumbing hookup



8. Freight

- Shipping on our trucks is a benefit to you; we take full responsibility until it reaches your site
- 8' units are not oversized and can be in transit any hour of the day
- 10' units are oversized and can only be on the road during daylight hours
- Your 8000 lb. - 10,000 lb. capacity forklift will lift most larger units with many options



9. What else we need to know:

- Street address where unit will be delivered
- Receiving hours for unloading
- Customer P.O. number and to whose attention it should be directed
- Your advanced delivery notification and gate number preferences



For information about Specialty Structures, call (630) 264-4336 in Illinois or 1-888-660-2025 or contact:
info@specialtystructures.com

Click below for:

[\[Look At Pictures For Ideas\]](#) [\[Go Back To The Home Page\]](#) [\[Contact Us\]](#) [\[Fishing Trip Pictures\]](#)

Last updated 26April2002